

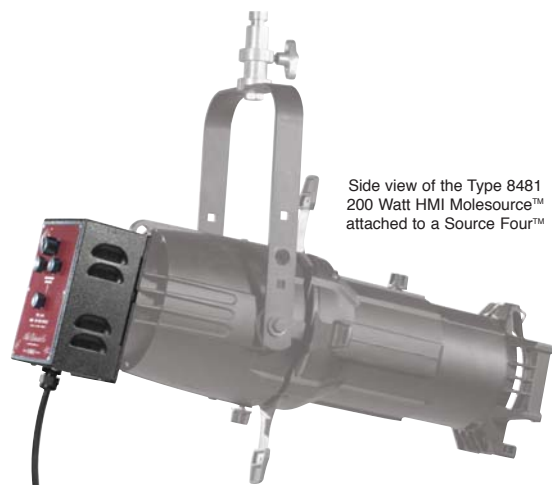
200 WATT HMI MOLESOURCE™ KIT

TYPE 8483

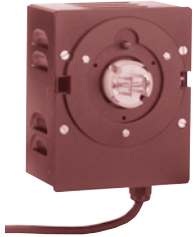


FEATURES

The MoleSource™ 200 Watt Kit offers a Daylight option for the ever popular Source Four™ Fixture from ETC®. With its wide range of lens options and third party accessories, the MoleSource™ compliments this system by replacing the lamp socket assembly with a bright, HMI daylight source. Light output more than doubles with the addition of this MoleSource™ fixture. No modifications are required to the Source Four head and it remains compatible with virtually all accessories. The Type 8481 200 Watt HMI MoleSource™ is powered with the Type 82833 Molelectronic flicker-free ballast with a single ON and OFF rocker switch, perfect for remote operation.



Side view of the Type 8481 200 Watt HMI Molesource™ attached to a Source Four™



Front View of the Type 8481
200 Watt HMI Molesource™



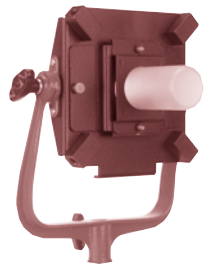
Type 82833
200W SquareWave AC Ballast

Optional Accessory



Type 82852
Head Extension Cable—15 ft.

Optional Accessory



Type 84830
Molesource™ Adapter
(Please see kit Type 8484 for more information)

MOLESOURCE KIT

TYPE 8483 MOLESOURCE™ KIT

8481 200W Molesource
82833 200W Electronic Ballast
58119 Moleded Case
MSR200HR 200 Watt Globe

SIZE: 15" x 20 1/2" x 9 1/2"

WEIGHT: 13 lbs.

Optional Accessory:

82852 Head Extension Cable—15 ft.
84830 Molesource Adapter

PERFORMANCE DATA

TYPE 8481 200 WATT MOLESOURCE™

Using 200 Watt, MSR200HR 5600°K HMI Lamp.

Distance Feet	Light Intensity F.C.	Field Diameter FT.
19° 200W		
30	530	9.0
40	300	12.0
50	190	15.0
60	132	18.0
26° 200W		
20	830	8.8
30	370	13.2
40	208	17.6
50	132	22.0
36° 200W		
10	1840	6.1
20	460	12.2
30	204	18.3
40	115	24.4
50° 200W		
10	1200	9.0
20	300	18.0
30	133	27.0
40	75	36.0

SPECIFICATIONS

HEAD: Type 8481, 200 watts

RATING: 120 volts, A.C.

5 amps max.—200 watts max.

SOCKET: Heavy Duty Electrical grade porcelain body with nickel contacts.

SAFETY SWITCH: Interlocking microswitch.

Shuts off power to globe socket if Molesource™ is removed.

CABLE: Attached, 15 Ft., Type SJO, 3 conductor, 18 AWG with 3-pin Neutrik® Connector.

CONSTRUCTION: Solid and perforated aluminum.

FOCUSING: Precision Globe adjustable centering via 3-axial alignment knobs.

SIZE: 6 3/4" x 4 1/2" x 5"

FINISH: Black Powder Coat Enamel

HEAD WEIGHTS: 3 lbs.

ELECTRONIC 200W AC SQUAREWAVE

BALLAST: Accessory Type 82833

RATING: Input—90V to 260V AC.

50 or 60 Hz 5 amps max.

CONTROL SWITCH: ON and OFF

rocker switch mounted on Ballast control panel. May be reignited when hot.

CIRCUIT PROTECTION: Fuse, 5 Amp.

CABLE: 5 ft., Attached to Ballast.

CONSTRUCTION: Solid and slotted sheet aluminum.

FINISH: Anodized Aluminum.

SIZE: 10" x 6 1/4" x 3"

BALLAST WEIGHT: 5 lbs.

GLOBE TABLE

TYPE 8481 200 WATT HMI MOLESOURCE™

Base — Burn any position; 1 9/16" L.C.L.

Watts	Ordering Code	Color Temp. °K	Volts	Life Hours	Amps
200	MSR200HR	5600	120	500	1.7

*The average color temperature decrease during life is .5°K-10°K per hour of operation. Globes not included in price of lamp. See price list for complete details.



TYPE 8483 200 WATT MOLESOURCE™ KIT

Included in Kit:

- 1 Type 8481 200W Molesource™
- 1 Type 82833 200W Ballast
- 1 MRS200HR 200W Globe
- 1 Type 58119 Moleded Case

Mole-Richardson Co.

937 North Sycamore Avenue, Hollywood, California 90038-2384 U.S.A.

Tel. (323) 851-0111 Fax. (323) 851-5593 E-Mail: info@mole.com

©Mole-Richardson Co., Hollywood, CA

World Wide Web: <http://www.mole.com>



Litho in U.S.A.