



# Mole-Richardson Co.

**TYPE 6651**

**6,000 WATT  
DAYLITE PAR®**



## FEATURES

The 6kW DayLite Par is designed for Motion Picture, Television, and Event Professionals worldwide. The combination cast and sheet aluminum construction features dramatically improved strength and cooling while the Brytal Aluminum parabolic reflector provides over 95% reflectivity. The electronics in the fixture are contained in a low-profile trough totally isolated from the main housing, and feature a swing-out trap door for easy access to the igniter and safety switch. The fixture has visual and tactile focal indicators to determine lamp position and, when used with the interchangeable lenses, the field of light can be fine-tuned for optimum beam control. Other features include: a trough skid for operating and safe transportation; an adjustable yoke pivot point; a locking, hinged front door for easy lamping; and a "pig-tail" style electrical input. Standard on all fixtures are a stainless steel safety screen, spring loaded fourth accessory clip, and variable accessory clip positions located at either 90° or 45°. Compatible with all existing 15<sup>1/2</sup>" accessories.

*Type 6651 Daylite Par®  
Mounted on  
Type 418183 Senior Size  
Litewate Sky-Hi Stand*



3

6



# Mole-Richardson Co.

## TYPE 6651

## 6,000 WATT DAYLITE PAR®

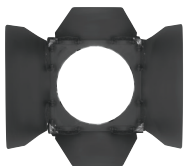


### GLOBE TABLE

Type 6651 Daylite Par®  
Base — Bipost, G38; Burn any position;  
8.25" L.C.L.

Watts	Ordering Code	Color Temp.°K	Volts	Life Hours
6000	6000 W/SE	5600	125	300
6000	DIS-60H	5600	125	300

\*The average color temperature decrease during life is .5°K-1°K per hour of operation. Globes not included in price of lamp.  
See price list for complete details.



Type 66595  
4-Way Light Shield



Type 66578  
Medium Lens

### PERFORMANCE DATA

Type 6651 Daylite Par® using 6,000 watt, 5600°K HMI Lamp.

Distance	No Lens (3.2°)		Narrow (11.6°)		Medium (32° x 15.5°)		Wide (52.4° x 19.8°)		Extra-Wide (69.6°)	
	Diameter/Ft.	F.C.	Diameter/Ft.	F.C.	W x H/Ft.	F.C.	W x H/Ft.	F.C.	Diameter/Ft.	F.C.
20	1.1	26,219	4.1	14,438	11.5 x 5.4	3,315	19.7 x 7.0	1,790	27.8	570
25	1.4	16,780	5.1	9,240	14.3 x 6.8	2,122	24.6 x 8.7	1,146	34.8	365
30	1.7	11,653	6.1	6,417	17.2 x 8.2	1,473	29.5 x 10.5	796	41.7	253
40	2.2	6,555	8.1	3,609	22.9 x 10.9	829	39.4 x 14.0	448	55.6	143
50	2.8	4,195	10.2	2,310	28.7 x 13.6	530	49.2 x 17.5	286	69.5	91
60	3.4	2,913	12.2	1,604	34.4 x 16.3	368	59.0 x 20.9	199	83.4	63
75	4.2	1,864	15.2	1,027	43.0 x 20.4	236	73.8 x 26.2	127	104.3	41
100	5.6	1,049	20.3	578	57.3 x 27.2	133	98.4 x 34.9	72	139.0	23
125	7.0	671	25.4	370	71.7 x 34.0	85	123.0 x 43.6	46	173.8	15
150	8.4	466	30.5	257	86.0 x 40.8	59	147.6 x 52.4	32	208.5	10
175	9.8	342	35.6	189	100.4 x 47.6	43	172.2 x 61.1	23	243.3	7
200	11.2	262	40.6	144	114.7 x 54.4	33	196.8 x 69.8	18	278.0	6

\*Light tapers smoothly at edge of field. Dimensions listed define flat area boundaries at which the intensities are approximately 50% of tabulated intensities at beam center.

### SPECIFICATIONS

HEAD: Type 6651 6,000 Watts

RATING: 135 volts, A.C., 65 amps max.

SOCKET: G38, Heavy duty electrical grade porcelain body with friction type bi-post brass inserts.

SWITCH: ON and OFF push-button switches mounted on rear of fixture.

May be re-ignited when hot.

SAFETY SWITCH: Interlock micro-switch at door shuts off power to globe sockets when door is opened. Globe cannot be turned on until door is closed.

CABLE: Attached 7-conductor, with male interlocking "Veam" type connector.

HEAD CONSTRUCTION: Rugged construction of cast and sheet aluminum.

YOKE: Aluminum tubing and cast aluminum trunnions with 1 1/8" dia. Junior Pin.

REFLECTOR: Highly polished aluminum Brytal finished parabolic reflector.

BEAM CONTROL: Four accessory lenses (listed below), used individually, change the beam pattern from Narrow to Extra Wide Flood. The beam pattern created by the lenses may be rotated within the diffuser clips for vertical or horizontal beam orientation. Further spot to flood adjustments can be made using the focus knob on the rear of the fixture.

FINISH: Clear Anodized Aluminum/Black Powder Coated Enamel.

SIZE: 29" x 19 1/2" x 21"

HEAD WEIGHT: 63 lbs. (w/cable)

### ACCESSORIES

- 66595 4-Way Light Shield
  - 66577 Narrow Lens (Split) (15 1/2")
  - 66578 Medium Lens (Split) (15 1/2")
  - 66579 Wide Lens (Split) (15 1/2")
  - 66580 Extra Wide Lens (Split) (15 1/2")
  - 64071 Lens Box
  - 41548A Diffuser Frame (15 1/2")
  - 415172S Single Moledura Scrim (15 1/2")
  - 415172D Double Moledura Scrim (15 1/2")
  - G139 Scrim Bag
  - 665154 6K DayLite Electronic System
  - 418183 Senior Size Litewater Sky-Hi Stand
- (See Stand Section for more information & options)

### BALLAST & HEAD CABLE

- 66569 4,000W/6,000W Electronic Ballast
  - 64070 6,000W/12,000W Electronic Ballast
- (See Ballast Section for more information & options)
- 64043 Head Extension Cable—50 ft.

