



# Mole-Richardson Co.

**TYPE 407**

**1,000 WATT  
BABY SOLARSPOT®**



## FEATURES

The Baby SolarSpot® is used in basic set lighting techniques in the motion picture, television and professional photographic industries. Used as a key-light, back-light or kicker where light control with a smooth even field from spot-to-flood is essential. Equipped with a safety screen.



TYPE 407 BABY SOLARSPOT®  
MOUNTED ON TYPE 40651A  
BABY SIZE STANDARD STAND



# Mole-Richardson Co.

## TYPE 407

### 1,000 WATT BABY SOLARSPOT®



#### GLOBE TABLE

Base, medium bipost. Burn within 45° of vertical base-down. T-6, T-7, T-20 or T-24 bulbs; 2½" L.C.L.

Watts	Ordering Code	Color Temp.°K	Finish	Life Volts	Hours	Amps
1000	EGT	3200	Clear	120	250	8.3
750	EGR	3200	Clear	120	200	6.3
500	EGN	3200	Clear	120	100	4.2

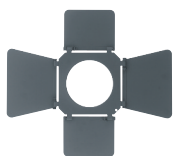
Globes not included in price of lamp.  
See price list for complete details.

#### SPECIFICATIONS

**HEAD:** Type 407, 1,000 watts.  
**RATING:** 120/240 volts, A.C. or D.C., 8.3 amps max.—1,000 watts max.  
**SOCKET:** Medium Bipost.  
**SWITCH:** Toggle switch mounted in lamp trough.  
**CABLE:** Attached 25 ft., Type SO, 3 conductor #18 AWG with 3-prong grounding houseplug. (Other plugs available upon request).  
**CONSTRUCTION:** Rugged, light sheet steel with interlocking channels for ventilation.  
**YOKE:** Cast aluminum. Fits any standard 5/8" dia. stand spud or 5/8" hanger spud.  
**CONDENSER:** 6" dia. Fresnel lens of glass. 15° to 58° field angle.  
**MIRROR:** Alzak Aluminum.  
**FOCUSING:** Easy action paddle-type handles. Front and rear.  
**FINISH:** Maroon Powder Coat Enamel.  
**SIZE:** 11¼" x 8⅝" x 10½".  
**HEAD WEIGHT:** 13¾ lbs. (w/cable).

#### ACCESSORIES

- 40755 2-Way Barn Door (2 Leaf)
- 40755A 4-Way Barn Door (4 Leaf)
- 407156 4-Way Barn Door (8 Leaf)
- 40748A Moledisc Diffuser Frame (6⅝" dia.)
- 407281S Half Single Moledura Scrim (6⅝" dia.)
- 407281D Half Double Moledura Scrim (6⅝" dia.)
- 407280S Single Moledura Scrim (6⅝" dia.)
- 407280D Double Moledura Scrim (6⅝" dia.)
- 40747A Snoots (Set of 3)
- 407184 Molesnoot (Five-In-One) Apertures: 2", 2⅜", 2¾", 3⅜", and 3½"
- G136 Scrim Bag
- 407B Blue Molecolor Daylight Conversion Filter
- 407155 Dichroic Daylight Conversion Filter
- 4131 Fresnel Condenser (Cold)
- 505407 Shutter
- 407183 Molering Diffuser Frame (6⅝" dia.)
- 500848 Heavy Duty C-Clamp & Adapter
- 407247 Mole Focal Spot
- 40651A Baby Size Standard Stand (See Stand Section for more options)



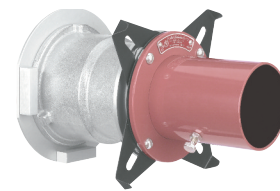
Type 40755A  
4-Way Barn Door



Type 407126D  
Double Moledura Scrim



Type 407184 Molesnoot



Type 407247  
Mole Focal Spot

#### PERFORMANCE DATA

Using 1,000 Watt, 120 volt, 3200° K quartz globe.

Distance in Feet	With Type 55 Lens Standard with Lamp				With Type 4131 Cold Lens Accessory Lens			
	Light Intensity F.C.		Beam Diameter* Feet		Light Intensity F.C.		Beam Diameter* Feet	
	Max. Flood	Min. Spot	Max. Flood	Min. Spot	Max. Flood	Min. Spot	Max. Flood	Min. Spot
5	700	6,320	4.3	0.8	510	1,925	5.3	1.5
10	180	1,720	8.5	1.5	130	600	10.5	2.5
15	80	770	12.8	2.2	60	290	15.8	4.0
20	45	440	17.1	3.0	30	165	21.1	5.1
25	30	280	21.3	3.8	20	105	26.2	6.4
30	20	195	25.6	4.5	15	70	31.7	7.8

\*Light tapers smoothly at edge of field. Dimensions listed define flat area boundaries at which the intensities are approximately 50% of tabulated intensities at beam center.

