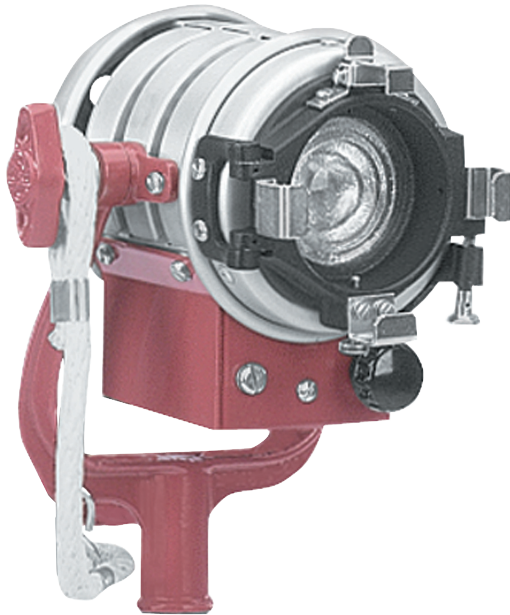




Mole-Richardson Co.

TYPE 3101

**100/200 WATT
INBETWEENIE
SOLARSPOT®**



FEATURES

The 100/200 watt Molequartz® InBetweenie Solarspot® uses the FVL 200 watt and the FVM 100 watt globes. Circular channel construction adds strength and more efficient airflow, resulting in cooler operation. Less heat on the fixture and lower seal temperature of the globes for longer life. Focusing knobs on the front and rear for focusing from spot-to-flood for a smoother even field. Curved yoke allows for a steeper lighting angle. The top clip is standard on all InBetweenies, allowing for barn doors, frames and scrims to be held more securely. For use in Motion Picture, Television and the Still Photographic Industries as a key-light, back-light or kicker.

TYPE 3101 100/200 WATT MOLEQUARTZ®
INBETWEENIE SOLARSPOT® MOUNTED
ON TYPE 3631 LITEWATE KIT STAND



2

3



Mole-Richardson Co.

TYPE 3101

100/200 WATT INBETWEENIE SOLARSPOT®

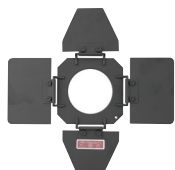


GLOBE TABLE

Base, miniature 2-pin (G5.3) Burn base-down to horizontal. T-3¹/₂ bulbs. 1.26" (32mm) L.C.L.

Watts	Ordering Code	Color Temp. °K	Finish	Volts	Life Hours	Amps
200	FVL	3200	Clear	120	200	2.1
100	FVM	3200	Clear	120	200	1.0
100	GLF	3200	Clear	230	200	1.0

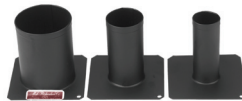
Globes not included in price of lamp.
See price list for complete details.



Type 2904
4-Way Light Shield



Type 2903
Moledisc Diffuser Frame



Type 29094
Snoots



Type 29095
Molesnoot



Type G12050
Scrim Bag

SPECIFICATIONS

HEAD: Type 3101 200 Watts.
RATING: 120/240 volts, A.C. or D.C., 1.7 amps max.-250 watts max.
SOCKET: Miniature 2-pin (G5.3).
SWITCH: Thru-cord type in cable.
CABLE: Attached 25 ft., Type SO, 3 conductor #18 AWG with 3-prong grounding houseplug. (Other plugs available upon request).
HEAD CONSTRUCTION: Rugged, light sheet aluminum with vertical circular interlocking channels for ventilation and perforated sheet aluminum in trough.
YOKE: Cast aluminum. Curved yoke allowing for steeper lighting angles. Fits any standard 5/8" dia. stand spud or 5/8" hanger spud.
CONDENSER: 2" dia. Baronsilcate Fresnel lens of heat resisting glass. 22° to 57° field angle.
REFLECTOR: Alzak aluminum.
FOCUSING: Rotating plastic knob on front and back.
FINISH: Anodized Aluminum and Maroon Powder Coat Enamel.
SIZE: 5⁷/₈" x 3⁵/₈" x 14³/₄".
HEAD WEIGHT: 6 lbs. (w/cable).

ACCESSORIES

- 2902 2-Way Barn Door
- 2904 4-Way Barn Door
- 2903 Moledisc Diffuser Frame (3")
- 29094 Snoots (Set of 3)
- 29095 Molesnoot (Four-in-One) Apertures: 5/8", 1", 1³/₈" and 1³/₄".
- 2908S Half Single Moledura Scrim (3")
- 2908D Half Double Moledura Scrim (3")
- 2909S Single Moledura Scrim (3")
- 2909D Double Moledura Scrim (3")
- G12050 Scrim Bag (4")
- 500848 C-Clamp and Adapter
- 3631 Litewate Kit Stand
(See Stand Section for more information & options)

PERFORMANCE DATA

Distance in Feet	Using FVL, 200 watt, 120 volt, 3200°K quartz globe				Using FVM, 100 watt, 120 volt, 3200°K quartz globe			
	Light Intensity F.C.		Beam Diameter* Feet		Light Intensity F.C.		Beam Diameter* Feet	
	Max. Flood	Min. Spot	Max. Flood	Min. Spot	Max. Flood	Min. Spot	Max. Flood	Min. Spot
5	92	212	3.9	1.3	48	112	3.6	1.2
10	23	53	7.8	2.6	12	28	7.3	2.3
15	10.2	24	11.7	3.9	5.3	12	10.9	3.5

*Light tapers smoothly at edge of field. Dimensions listed define flat area boundaries at which the intensities are approximately 50% of tabulated intensities at beam center.

