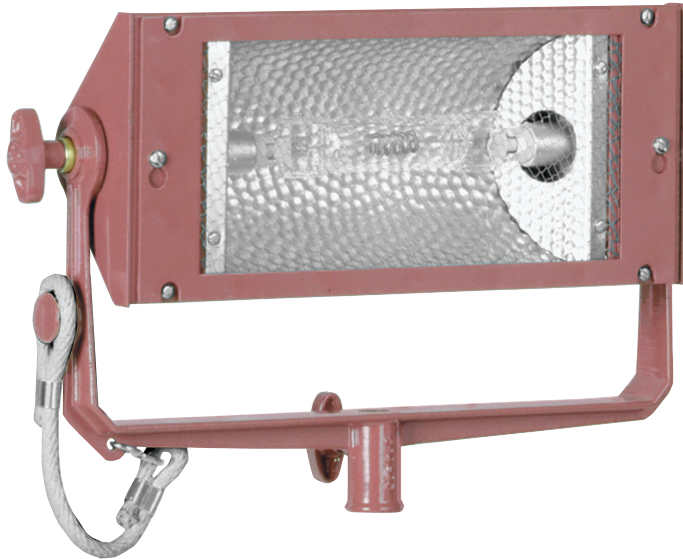




Mole-Richardson Co.

TYPE 2941

**2,000 WATT
MOLEQUARTZ®
2K NOOKLITE**



FEATURES

This versatile lighting fixture is a very portable and compact source of illumination. Its reflector provides a wide, even field of light which makes it ideal for general "fill," background light, or "bounce" light. Equipped with safety screen.

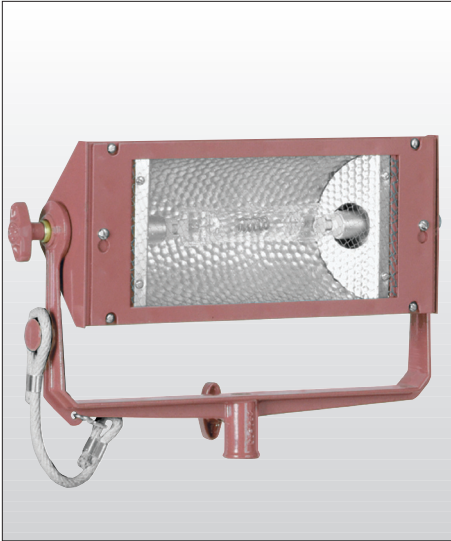


TYPE 2941 MOLEQUARTZ® NOOKLITE
MOUNTED ON TYPE 2541 COMPACT
LITEWATE BABY SIZE STAND



Mole-Richardson Co.

TYPE 2941 
2,000 WATT
MOLEQUARTZ®
2K NOOKLITE



SPECIFICATIONS

HEAD: Type 2941, 2,000 watts.
RATING: 120/240 volts, A.C. or D.C., 16.7 amps max.—2,000 watts max.
SOCKETS: Compressible single contract. (Two per globe).
CABLE: Attached 25 ft., Type SO, 3 conductor #14 AWG. (Specify type of plug when ordering).
SWITCH: Thru-cord type in cable.
CONSTRUCTION: Solid and perforated sheet steel.
YOKE: Cast aluminum. Fits any standard 5/8" dia. stand spud or 5/8" hanger spud.
REFLECTOR: Aluminum, special Molebrite® Alzak surface.
SIZE: 12" x 5 3/8" x 2 1/2".
FINISH: Maroon Powder Coat Enamel
HEAD WEIGHT: 8 1/4 lbs. (w/cable).

ACCESSORIES

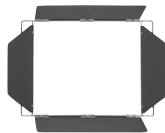
- 2942 2-Leaf Light Shield
- 2944 4-Leaf Light Shield
- 2945 Accessory Holder
- 2948S Single Moledura Scrim (8 5/8" x 9 15/16")
Accessory Holder needed for mounting.
- 2948D Double Moledura Scrim (8 5/8" x 9 15/16")
Accessory Holder needed for mounting.
- 2946 Blue Molocolor Daylight Conversion Filter
Accessory Holder needed for mounting.
- 2947 Dichroic Daylight Conversion Filter
Accessory Holder needed for mounting.
- G137 Scrim Bag
- 500848 C-Clamp and Adapter
- 2541 Compact Litewate Baby Size Stand
(See Stand Section for more information & options)

GLOBE TABLE

Base, recessed single contact. Burn any position. T-6 bulb or T-8 bulb; 5 5/8" M.O.L.

Watts	Ordering Code	Color Temp.*K	Finish	Volts	Life Hours	Amps
2000	FEY	3200	Clear	120	500	16.7
2000	FEX	3200	Clear	240	300	8.3
1000	FER	3200	Clear	120	500	8.3
1000	DWT	3000	Clear	120	2000	8.3

Globes not included in price of lamp.
 See price list for complete details.



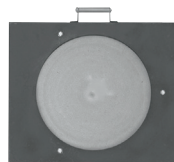
Type 2944
4-Way Light Shield



Type 2945
Accessory Holder



Type 2948S
Single Moledura Scrim



Type 2947 Dichroic
Daylight Conversion Filter



Type G137
Scrim Bag

PERFORMANCE DATA

Using FEY-Q20008/4CL, 2,000 Watt, 120 volt, 3200° K quartz globe.

Distance Feet	Light Intensity F.C.	Lighted Area Dimension*—Feet	
		Width	Height
5	1,000	8.5	4.4
10	250	17.1	8.7
15	110	25.6	13.1
20	60	34.2	17.5
25	40	42.7	21.9
30	27	51.2	26.2

*Light tapers smoothly at edge of field. Dimensions listed define flat area boundaries at which the intensities are approximately 50% of tabulated intensities at beam center.

