

400 WATT HMI MOLESOURCE™ KIT

TYPE 84921

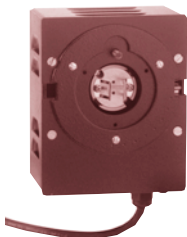


FEATURES

The MoleSource™ 400 Watt Kit offers a Daylight option for the ever popular Source Four™ Fixture from ETC®. With its wide range of lens options and third party accessories, the MoleSource™ compliments this system by replacing the lamp socket assembly with a bright, HMI daylight source. Light output nearly triples with the addition of this MoleSource™ fixture. No modifications are required to the Source Four head and it remains compatible with virtually all accessories. The Type 8491 400 Watt HMI MoleSource™ is powered with the Type 82926 MoleSource™ flicker-free ballast with a single ON and OFF rocker switch, perfect for remote operation.



Side view of the Type 8491
400 Watt HMI Molesource
attached to a Source Four™

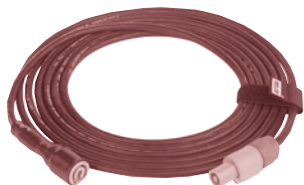


Front View of the Type 8491
400 Watt HMI Molesource™



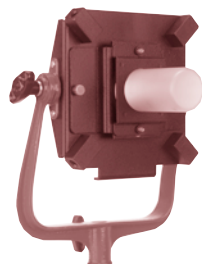
Type 82926
400W SquareWave AC Ballast

Optional Accessory



Type 82924
Head Extension Cable—15 ft.

Optional Accessory



Type 84830
Molesource™ Adapter
(Please see kit Type 84927 for more information)

MOLESOURCE KIT

TYPE 84921 MOLESOURCE™ KIT

8491 400W MoleSource
82926 400W Electronic Ballast
58119 Moleded Case
MSR400HR 400 Watt Globe

SIZE: 15" x 20 1/2" x 9 1/2"

WEIGHT: 16 lbs

Optional Accessory:

82924 Head Extension Cable—15 ft
84830 Molesource Adapter

PERFORMANCE DATA

TYPE 8491 400 WATT MOLESOURCE™

Using 400 Watt, MSR400HR 5600°K HMI Lamp.

Distance Feet	Light Intensity F.C.	Field Diameter FT.
19° 400W		
30	711	9.0
40	400	12.0
50	256	15.0
60	178	18.0
26° 400W		
20	990	8.8
30	440	13.2
40	248	17.6
50	158	22.0
36° 400W		
10	2000	6.1
20	500	12.2
30	278	18.3
40	156	24.4
50° 400W		
10	1280	9.0
20	320	18.0
30	142	27.0
40	80	36.0

SPECIFICATIONS

HEAD: Type 8491, 400 watts

RATING: 120 volts, A.C.

7 amps max.—400 watts max.

SOCKET: Heavy Duty Electrical grade porcelain body with nickel contacts.

SAFETY SWITCH: Interlocking microswitch. Shuts off power to globe socket if MoleSource™ is removed.

CABLE: Attached, 15 Ft., Type SJO, 3 conductor, 18 AWG with 3-pin Neutrik® Connector.

CONSTRUCTION: Solid and perforated aluminum.

FOCUSING: Precision Globe adjustable centering via 3-axial alignment knobs.

SIZE: 6 3/4" x 4 1/2" x 5"

FINISH: Black Powder Coat Enamel

HEAD WEIGHTS: 3 lbs.

ELECTRONIC 400W AC SQUAREWAVE

BALLAST: Accessory Type 82926

RATING: Input—90V to 260V AC.

50 or 60 Hz 7.5 amps max.

CONTROL SWITCH: ON and OFF rocker switch mounted on Ballast control panel. May be reignited when hot.

CIRCUIT PROTECTION: Fuse, 10 Amps.

CABLE: 5 ft., Attached to Ballast.

CONSTRUCTION: Solid and slotted sheet aluminum.

FINISH: Anodized Aluminum/Black Powder Coat Enamel.

SIZE: 11" x 7 1/2" x 6 1/4"

BALLAST WEIGHT: 8 lbs.

GLOBE TABLE

TYPE 8491 400 WATT HMI MOLESOURCE™

Base — Burn any position; 1 9/16" L.C.L.

Watts	Ordering Code	Color Temp. °K	Volts	Life Hours	Amps
400	MSR400HR	5600	120	500	3.5

*The average color temperature decrease during life is .5°K-10°K per hour of operation. Globes not included in price of lamp. See price list for complete details.



TYPE 84921 400 WATT MOLESOURCE™ KIT

Included in Kit:

- 1 Type 8491 400W Molesource™
- 1 Type 82926 400W Ballast
- 1 MRS400HR 400W Globe
- 1 Type 58119 Moleded Case

Mole-Richardson Co.

937 North Sycamore Avenue, Hollywood, California 90038-2384 U.S.A.

Tel. (323) 851-0111 Fax. (323) 851-5593 E-Mail: info@mole.com

©Mole-Richardson Co., Hollywood, CA

World Wide Web: <http://www.mole.com>



Litho in U.S.A.