

## 500 WATT MOLITE

## TYPE 500817



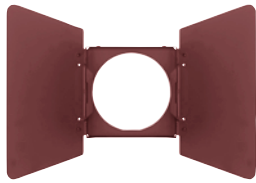
TYPE 500817 MOLITE WITH  
SOCKET, R-40 BULB, TYPE 24922  
BARN DOOR & DIFFUSER HOLDER

### FEATURES

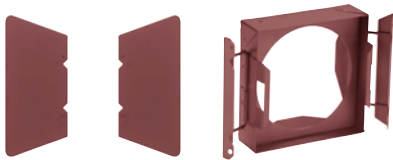
Multipurpose fixture with unique construction for studio, location or remote use. Lightweight and compact, it can be used as a fill-light or floodlight in interiors of cars, buses, airplanes or any area where there is a minimum of space. Because of its functional design, this fixture can be attached to doors, pipes or stuck to a wall with tape. Diffuser holder has positive snap-on construction for attaching securely to globe. Socket can be rotated or tilted to any position desired.



TYPE 500817 MOLITE WITH  
SOCKET, R-40 BULB



Type 2491 Diffuser Holder



Type 24922 Barn Door and Diffuser Holder shown detached.



Type 40748A Moledisc Diffuser Frame



Type 407183 Molering Diffuser Frame



Type 407125D Half Double Moledura Scrim



Type 407126D Double Moledura Scrim

## ACCESSORIES

- 2491 R-40 Diffuser Holder  
(Accepts accessories marked with \*)
- 24922 R-40 Barn Door and Diffuser Holder  
(Accepts accessories marked with †)
- \* 24912 2-Way Barn Door (2 Leaf)
- \* 24914 4-Way Barn Door (4 Leaf)
- † 23535 Molering Diffuser Frame (5<sup>1</sup>/<sub>8</sub>" )
- † 40437A Moledisc Diffuser Frame (5<sup>1</sup>/<sub>8</sub>" )
- \* 40448A Moledisc Diffuser Frame (6<sup>5</sup>/<sub>8</sub>" )
- \* 407166 Molequik Diffuser Frame (6<sup>5</sup>/<sub>8</sub>" )
- \* 407183 Molering Diffuser Frame (6<sup>5</sup>/<sub>8</sub>" )
- † 23525S Half Single Moledura Scrim—  
Wire Screen (6<sup>5</sup>/<sub>8</sub>" )
- † 23525D Half Double Moledura Scrim—  
Wire Screen (5<sup>1</sup>/<sub>8</sub>" )
- † 23526D Double Moledura Scrim—  
Wire Screen (5<sup>1</sup>/<sub>8</sub>" )
- \* 407125S Half Single Moledura Scrim—  
Wire Screen (6<sup>5</sup>/<sub>8</sub>" )
- \* 407125D Half Double Moledura Scrim—  
Wire Screen (6<sup>5</sup>/<sub>8</sub>" )
- \* 407126S Single Moledura Scrim—  
Wire Screen (6<sup>5</sup>/<sub>8</sub>" )
- \* 407126D Double Moledura Scrim—  
Wire Screen (6<sup>5</sup>/<sub>8</sub>" )

## SPECIFICATIONS

### MOLITE CLAMP WITH GLOBE SOCKET:

- Type 500817.
- SOCKET:** Medium screw.
- RATING:** 120/240 volts, A.C. or D.C., 4.2 amps max.— 500 watts max.
- SWITCH:** Thru-cord type in cable.
- CABLE:** 25 ft., Type SVT, 3 conductor #18 AWG with 3-prong grounding houseplug. (Other plug supplied on request).
- CABLE WEIGHT:** 1<sup>3</sup>/<sub>4</sub> lbs.
- CONSTRUCTION:** Sturdy, lightweight, Plastisol covered aluminum grip with porcelain socket.
- TILTING:** Friction joints permits rotating lamp 360 degrees on horizontal plane and 180 degrees on vertical plane of base surface.
- FINISH:** Red anodize aluminum with black Plastisol.
- BARN DOOR AND DIFFUSER HOLDER:** Accessory Type 24922 R-40 Barn Door and Diffuser Holder mounts on R-40 (5" dia.) bulb. Sheet metal diffuser clips accept 5<sup>1</sup>/<sub>8</sub>" dia. diffusion.
- SIZE:** 10<sup>1</sup>/<sub>8</sub>" x 2<sup>3</sup>/<sub>4</sub>" x 5<sup>1</sup>/<sub>4</sub>" folded.
- FINISH:** Bright zinc plating.
- DIFFUSER HOLDER:** Accessory Type 2491. R-40 Diffuser Holder mounts on R-40 (5" dia.) bulb. Sheet metal diffuser clips accept 6<sup>5</sup>/<sub>8</sub>" dia. diffusion.
- SIZE:** 6<sup>1</sup>/<sub>4</sub>" x 3" x 3<sup>1</sup>/<sub>4</sub>".
- WEIGHT:**
- GRIP AND SOCKET:** 1/2 pound.
- GABLE:** 1<sup>3</sup>/<sub>4</sub> pounds.

## GLOBE TABLE

**TYPE 500308 MOLITE WITH GLOBE SOCKET**  
Base, medium screw. Burn any position. R-40 bulb.

Watts	Ordering Code	Color Temp. °K	Volts	Beam Pattern	Life Hours	Amps
500	DXB	3400	115-120	Spot	6	4.2
500	DXC	3400	115-120	Flood	6	4.2
500	EAH	3400	220-240	Flood	6	2.1
500	EAL	3200	120	Med. Flood	15	4.2

Globes not included in price of lamp.  
See price list for complete details.

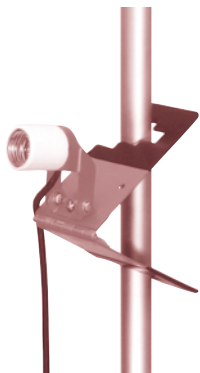
## PERFORMANCE DATA

### TYPE 500817 MOLITE WITH GLOBE SOCKET

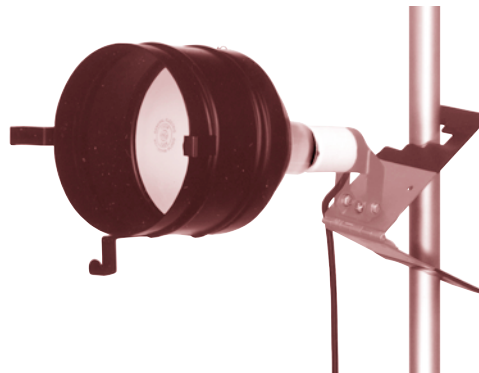
Using EAL, 500 watt, 120 volt, 3200°K incandescent globe and Type 24922 R-40 Barn Door and Diffuser Holder.

Distance Feet	Light Intensity F.C.	Beam Diameter* Feet
4	400	2.8
8	110	5.8
12	50	8.8
16	30	11.8
20	20	14.7

\*Light tapers smoothly at edge of field. Diameters listed are flat area diameters at which the intensities are approximately 50% of tabulated intensities at beam center.



Type 500817 Molite with Socket



Type 500817 Molite with Socket, R-40 Bulb, and Type 2491 Diffuser Holder

*Mole-Richardson Co.*

937 North Sycamore Avenue, Hollywood, California 90038-2384 U.S.A.

Tel. (323) 851-0111 Fax. (323) 851-5593 E-Mail: info@mole.com

©Mole-Richardson Co., Hollywood, CA

World Wide Web: <http://www.mole.com>



Litho in U.S.A.