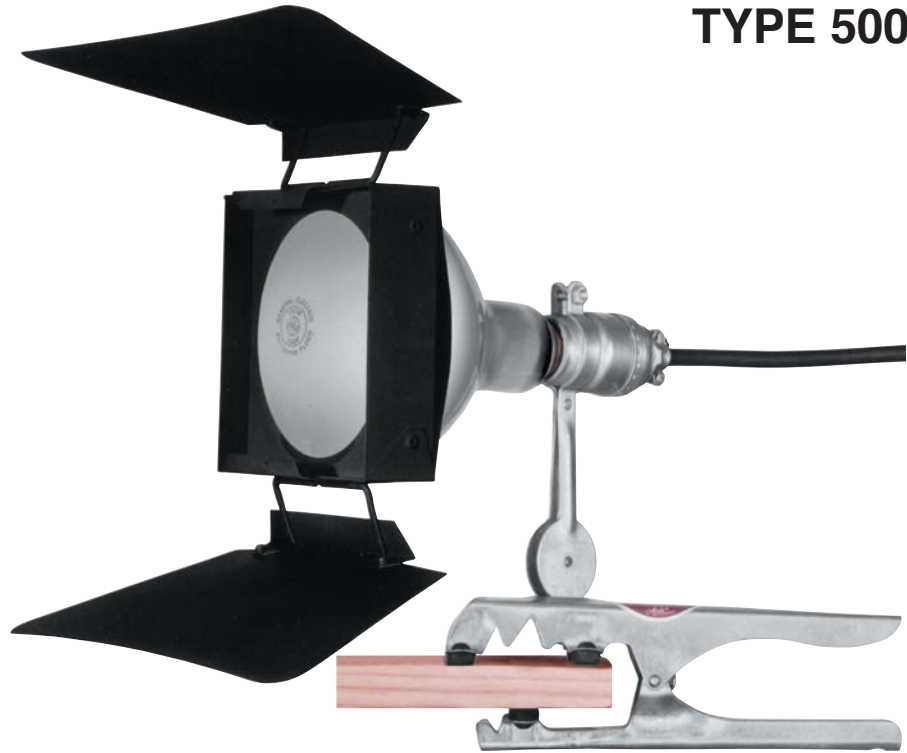


500 WATT MOLEGATOR GRIP WITH SOCKET

TYPE 500308



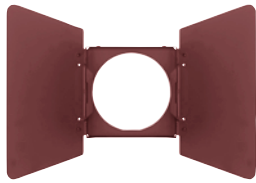
TYPE 500308 MOLEGATOR GRIP WITH
SOCKET, R-40 BULB, TYPE 24922
BARN DOOR & DIFFUSER HOLDER

FEATURES

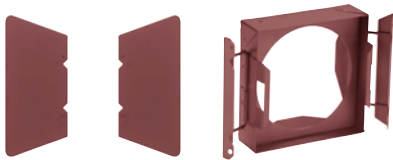
Multipurpose fixture for studio, location or remote use. Lightweight and compact, it can be used as a fill-light or floodlight in interiors of cars, buses, airplanes or any area where there is a minimum of space and a clamp-on-light is needed. New diffuser holder has positive snap-on construction for attaching securely to globe. Fixture can be rotated or tilted to any position desired.



TYPE 500308 MOLEGATOR GRIP WITH
SOCKET, R-40 BULB



Type 2491 Diffuser Holder



Type 2492 Barn Door and Diffuser Holder shown detached.



Type 40748A Moledisc Diffuser Frame



Type 407183 Molering Diffuser Frame



Type 407125D Half Double Moledura Scrim



Type 407126D Double Moledura Scrim

ACCESSORIES

- 2491 R-40 Diffuser Holder
(Accepts accessories marked with *)
- 2492 R-40 Barn Door and Diffuser Holder
(Accepts accessories marked with †)
- * 24912 2-Way Barn Door (2 Leaf)
- * 24914 4-Way Barn Door (4 Leaf)
- † 23535 Molering Diffuser Frame (5¹/₈")
- † 40437A Moledisc Diffuser Frame (5¹/₈")
- * 40448A Moledisc Diffuser Frame (6⁵/₈")
- * 407166 Molequik Diffuser Frame (6⁵/₈")
- * 407183 Molering Diffuser Frame (6⁵/₈")
- † 23525S Half Single Moledura Scrim—
Wire Screen (6⁵/₈")
- † 23525D Half Double Moledura Scrim—
Wire Screen (5¹/₈")
- † 23526D Double Moledura Scrim—
Wire Screen (5¹/₈")
- * 407125S Half Single Moledura Scrim—
Wire Screen (6⁵/₈")
- * 407125D Half Double Moledura Scrim—
Wire Screen (6⁵/₈")
- * 407126S Single Moledura Scrim—
Wire Screen (6⁵/₈")
- * 407126D Double Moledura Scrim—
Wire Screen (6⁵/₈")
- 500310 Molegator Grip with Socket Clamp

GLOBE TABLE

TYPE 500308 MOLEGATOR GRIP WITH GLOBE SOCKET

Base, medium screw. Burn any position. R-40 bulb.

Watts	Ordering Code	Color Temp. °K	Volts	Beam Pattern	Life Hours	Amps
500	DXB	3400	115-120	Spot	6	4.2
500	DXC	3400	115-120	Flood	6	4.2
500	EAH	3400	220-240	Flood	6	2.1
500	EAL	3200	120	Med. Flood	15	4.2

Globes not included in price of lamp.
See price list for complete details.

SPECIFICATIONS

MOLEGATOR GRIP WITH GLOBE SOCKET: Type 500308.

SOCKET: Medium screw. Brass shell socket body and cap with cord grip.
RATING: 120/240 volts, A.C. or D.C., 4.2 amps max.—500 watts max.

SWITCH: Thru-cord type in cable.

CABLE: 25 ft., Type SJO, 3 conductor #18 AWG with 3-prong grounding houseplug. (Other plug supplied on request).

CABLE WEIGHT: 1³/₄ lbs.

CONSTRUCTION: Sturdy, lightweight, spring loaded cast aluminum grip with rubber gripping pads and sheet steel socket clamp.

TILTING: Spring loaded friction joint on clamp permits moving lamp 360 degrees on horizontal plane and 180 degrees on vertical plane of upper jaw surface.

FINISH: Ball burnished aluminum and galvanized sheet steel.

BARN DOOR AND DIFFUSER HOLDER:

Accessory Type 24922 R-40 Barn Door and Diffuser Holder mounts on R-40 (5" dia.) bulb. Sheet metal diffuser clips accept 5¹/₈" dia. diffusion.

SIZE: 10¹/₈" x 2³/₄" x 5¹/₄" folded.

FINISH: Bright zinc plating.

DIFFUSER HOLDER: **Accessory** Type 2491. R-40 Diffuser Holder mounts on R-40 (5" dia.) bulb. Sheet metal diffuser clips accept 6⁵/₈" dia. diffusion.

SIZE: 8¹/₂" x 2" x 8".

WEIGHT:

GRIP AND SOCKET: 3/4 pound.

GABLE: 1³/₄ pounds.

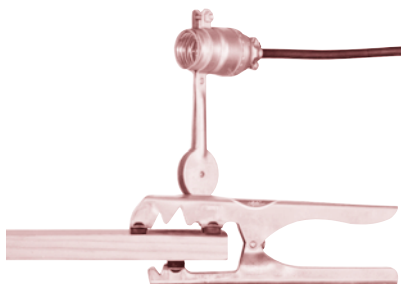
PERFORMANCE DATA

TYPE 500308 MOLEGATOR GRIP WITH GLOBE SOCKET

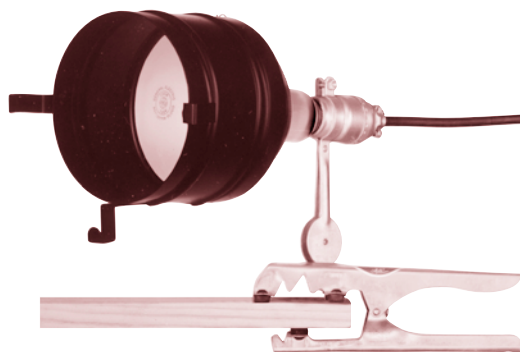
Using EAL, 500 watt, 120 volt, 3200°K incandescent globe and Type 24922 R-40 Barn Door and Diffuser Holder.

Distance Feet	Light Intensity	Beam Diameter* Feet
	F.C.	
4	400	2.8
8	110	5.8
12	50	8.8
16	30	11.8
20	20	14.7

*Light tapers smoothly at edge of field. Diameters listed are flat area diameters at which the intensities are approximately 50% of tabulated intensities at beam center.



Type 500308 Molegator Grip with Socket



Type 500308 Molegator Grip with Socket, R-40 Bulb, and Type 2491 Diffuser Holder

Mole-Richardson Co.

937 North Sycamore Avenue, Hollywood, California 90038-2384 U.S.A.

Tel. (323) 851-0111 Fax. (323) 851-5593 E-Mail: info@mole.com

World Wide Web: <http://www.mole.com>

©Mole-Richardson Co., Hollywood, CA



Litho in U.S.A.